



Mature Homes Ltd

Where Dreams Come Home



Specification For The Calder, Barden, Reedley



FLITCRAFT
ECOBUILD



The Intelligent Design Centre
Creative thinking in architecture, engineering and the built environment

Harle Syke, Burnley BB10 2PN





Contents

Homes Ltd

1. Ground Floor Hallway
2. Ground Floor Garage
3. Ground Floor Cloakroom
4. Ground Floor
Lounge/Bedroom
5. First Floor Kitchen
6. First Floor Lounge
7. First Floor Stairway
8. Second Floor Bedroom 1
9. Second Floor Bedroom 2
10. Second Floor Bedroom 3
11. Second Floor En-Suite
12. Second Floor Bathroom
13. Cylinder Cupboard



FLITCRAFT
ECOBUILD

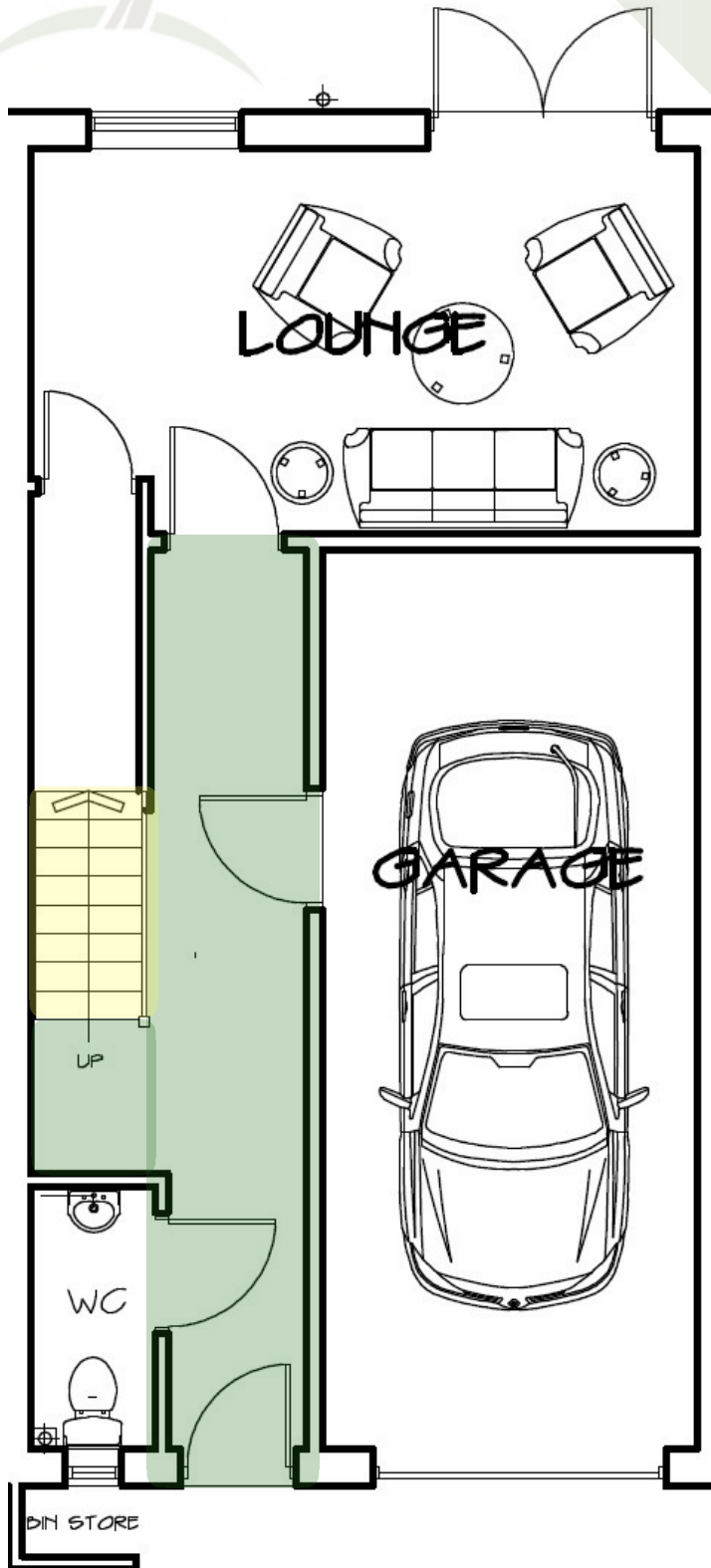


The Intelligent Design Centre
Creative thinking in architecture, engineering and the built environment

Harle Syke, Burnley BB10 2PN



Ground Floor Hallway



Hallway

- Front Door
- Plug Sockets
- Lights
- Radiators
- Windows
- Internal Door
- Stairway
- Coving to Ceilings in Lounge, Dining Room/Area and Hallway
- All Ceilings to be skim finished and painted white
- All Walls to be skim finished and painted soft cream
- Chrome Effect Internal Door Furniture



FLITCRAFT
ECOBUILD



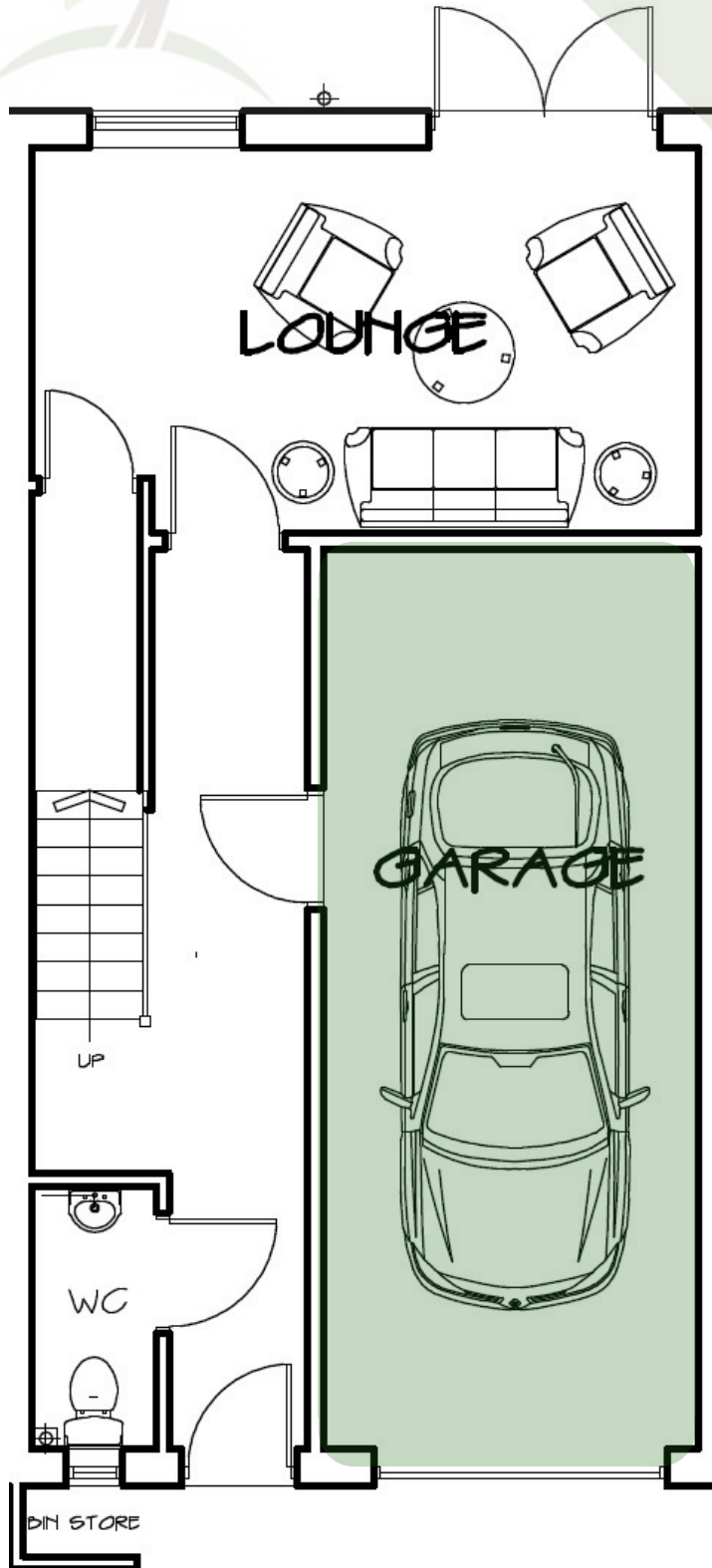
The Intelligent Design Centre
Creative thinking in architecture, engineering and the built environment

Harle Syke, Burnley BB10 2PN



Ground Floor Garage

Ma tree Homes Ltd



Garage

2.70 x 6.06 = 16.1 sq m

8' 8" x 19' 8" = 174 sq sf

- Plug Sockets
- Lights
- Windows
- Internal Door
- Garage Door



FLITCRAFT
ECOBUILD



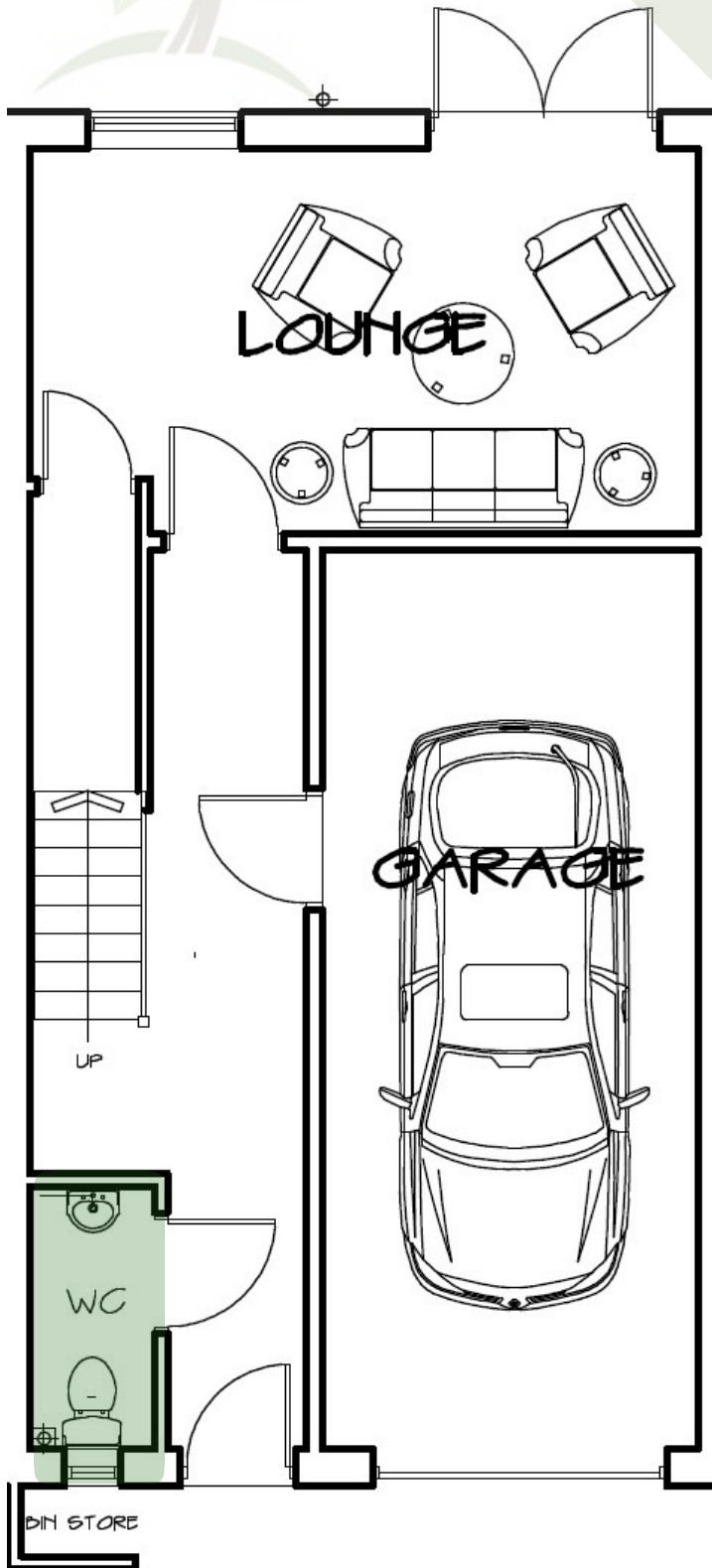
The Intelligent Design Centre
Creative thinking in architecture, engineering and the built environment

Harle Syke, Burnley BB10 2PN



Ground Floor Cloakroom

Ma tree Homes Ltd



Cloakroom

- Toilet
 - Sink
 - Lights
 - Carpets
 - Windows
 - Tiles
 - Internal Door
 - Plumbing
 - Hand Towel Rail
-
- All Ceilings to be skim
 - finished and painted white
 - All Walls to be skim finished
 - and painted soft cream
 - Chrome Effect Internal Door



FLITCRAFT
ECOBUILD



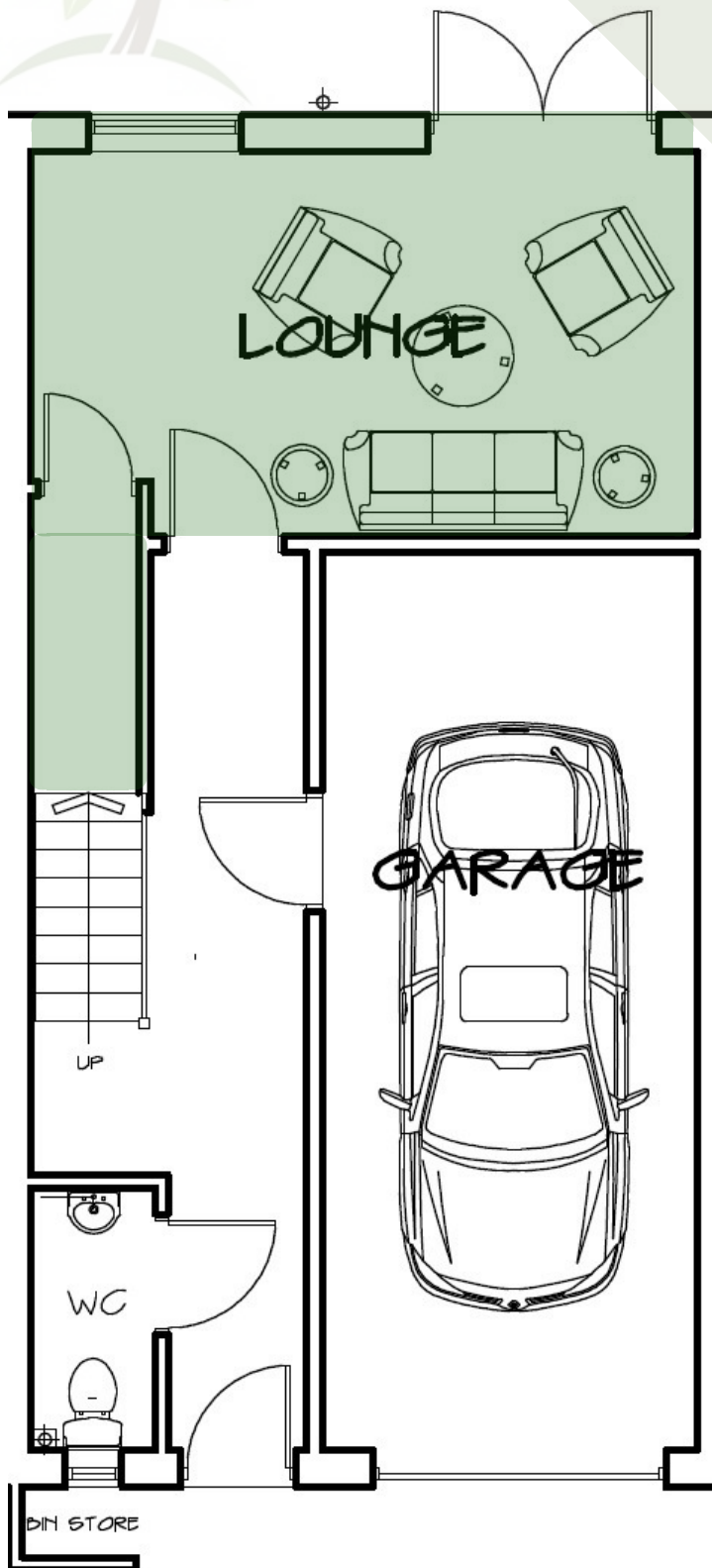
The Intelligent Design Centre
Creative thinking in architecture, engineering and the built environment

Harle Syke, Burnley BB10 2PN





Ground Floor Lounge / Bedroom



Family room/Bedroom

4 5.14 x 3.19 = 16.1 sq m

16' 8" x 10' 4" = 174 sq ft

- Plug Sockets
- Lights
- Carpets
- Windows
- Radiators
- Patio Doors
- Internal Doors 2
- All Ceilings to be skim
finished and painted white
- All Walls to be skim finished
and painted soft cream
- Chrome Effect Internal Door



FLITCRAFT
ECOBUILD



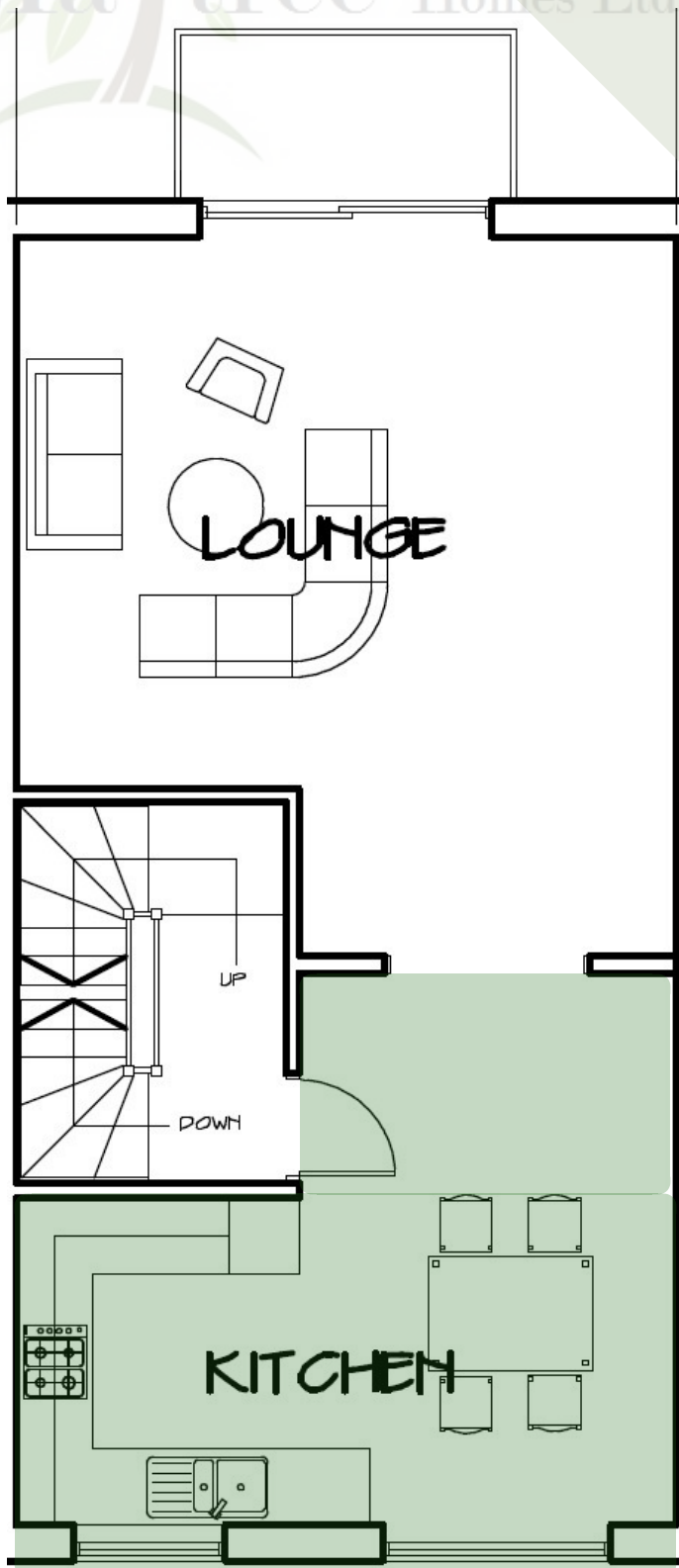
The Intelligent Design Centre
Creative thinking in architecture, engineering and the built environment

Harle Syke, Burnley BB10 2PN



First Floor Kitchen

Ma tree Homes Ltd



Kitchen/Dining area

$5.14 \times 3.84 = 19.69 \text{ sq m}$

$16' 8" \times 12' 6" = 212 \text{ sq ft}$

- Plug Sockets
- Lights
- Radiators
- Carpets or Flooring
- Windows
- Plumbing
- Luxury Fitted Kitchen with Choice of
- Finishes
- Choice of Worktops to Kitchen with
- Matching Upstands
- Stainless Steel Single Electric Oven, 4
- Ring Gas Hob with Stainless Steel
- Splashback and Extractor Hood
- Inset Stainless Steel Sink
- Coving to Ceilings in Lounge, Dining
- Room/Area and Hallway
- All Ceilings to be skim finished and
- painted white
- All Walls to be skim finished and painted
- soft cream
- Chrome Effect Internal Door Furniture



FLITCRAFT
ECOBUILD

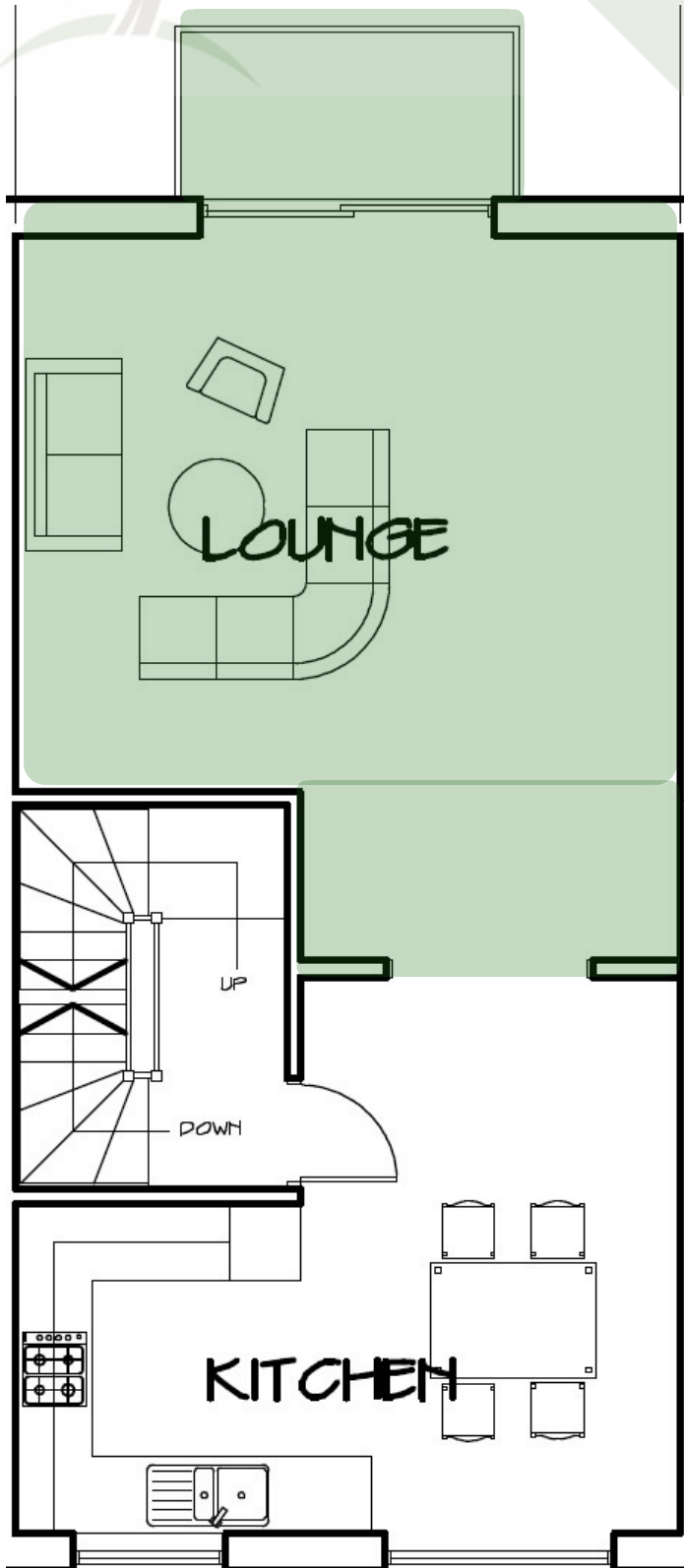


The Intelligent Design Centre
Creative thinking in architecture, engineering and the built environment

Harle Syke, Burnley BB10 2PN

NHBC

First Floor Lounge



Lounge

5.14 x 6.12 = 31.2 sq m
16' 8" x 20' 0" = 336 sq ft

- Plug Sockets
- Lights
- Radiators
- Carpets
- Windows
- Patio Doors
- Balcony
- Plumbing
- Coving to Ceilings in Lounge, Dining
- Room/Area and Hallway
- All Ceilings to be skim finished and painted white
- All Walls to be skim finished and painted soft cream
- Chrome Effect Internal Door
- Furniture
- Television Aerial Point to Lounge
- Telephone Point to Lounge
- 1st Fix Wiring for Security Alarm*



FLITCRAFT
ECOBUILD

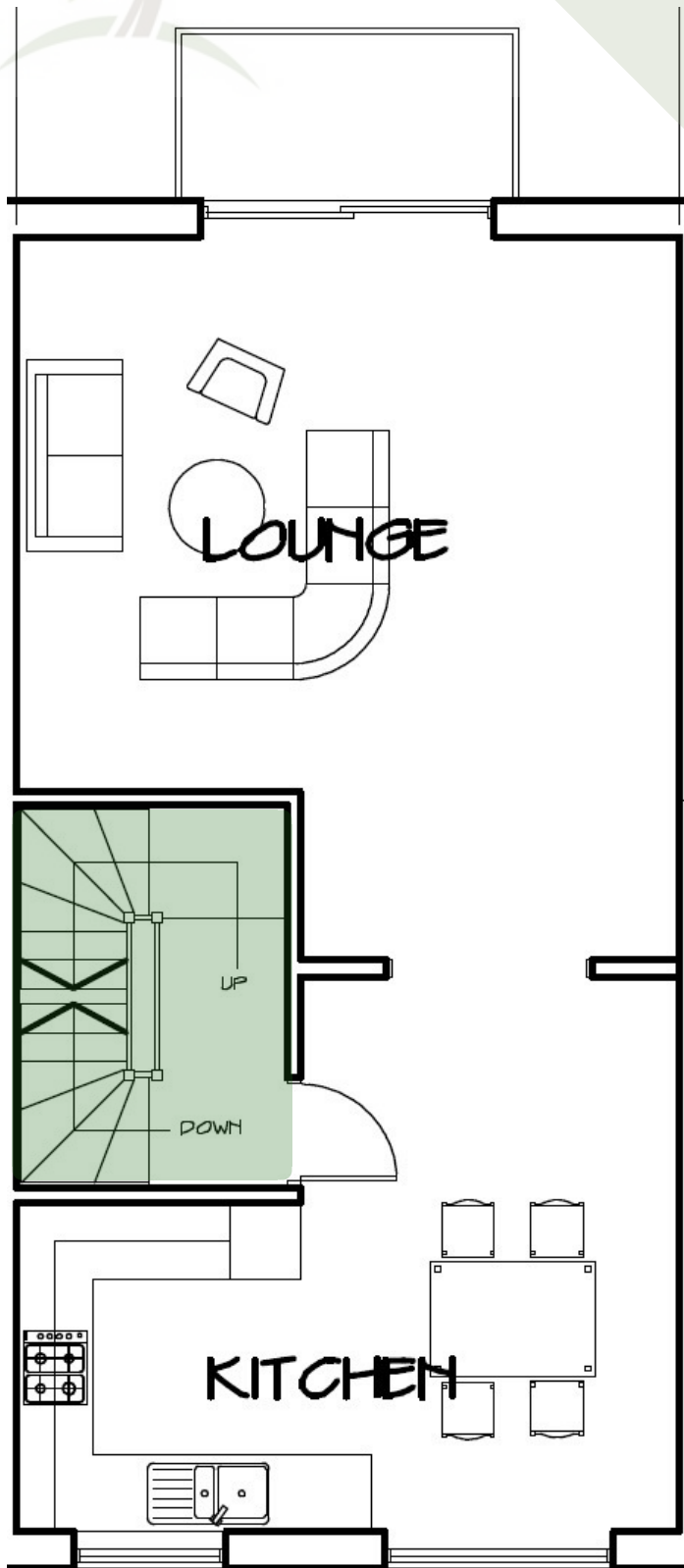


The Intelligent Design Centre
Creative thinking in architecture, engineering and the built environment

Harle Syke, Burnley BB10 2PN



First Floor Stairway



Stairway

- Plug Sockets
 - Lights
 - Radiators
 - Carpet
 - Plumbing
-
- All Ceilings to be skim finished and painted white
 - All Walls to be skim finished and painted soft cream
 - Chrome Effect Internal Door



FLITCRAFT
ECOBUILD



The Intelligent Design Centre
Creative thinking in architecture, engineering and the built environment

Harle Syke, Burnley BB10 2PN



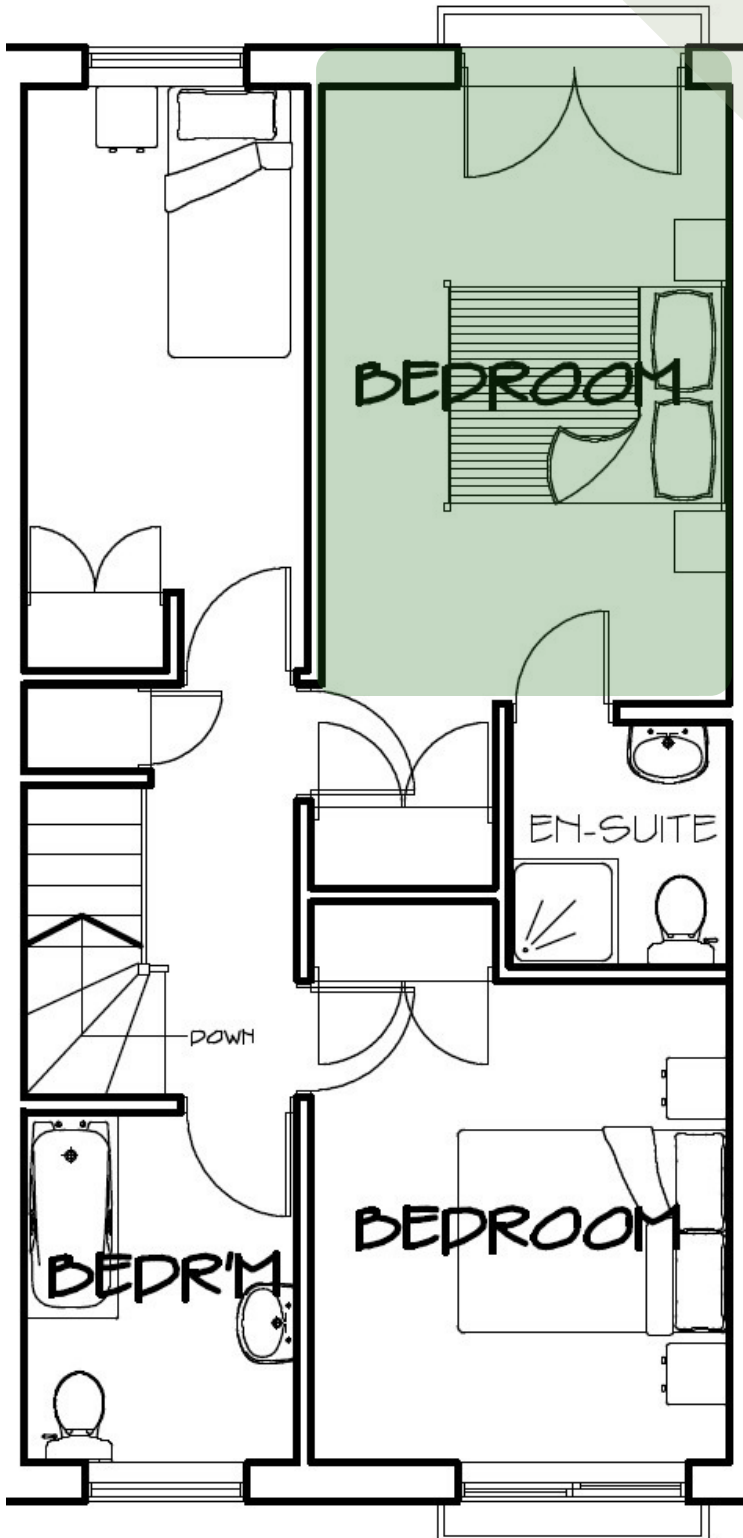
Second Floor Bedroom 1



Bedroom 1

2.93 x 3.84 = 11.14 m

9' 6" x 12' 5" = 120 sq ft



- Plug Sockets
- Lights
- Radiators
- Carpets
- Windows
- Patio Doors
- Juliet Balcony
- All Ceilings to be skim finished and painted white
- All Walls to be skim finished and painted soft cream
- Chrome Effect Internal Door Furniture



FLITCRAFT
ECOBUILD



The Intelligent Design Centre
Creative thinking in architecture, engineering and the built environment

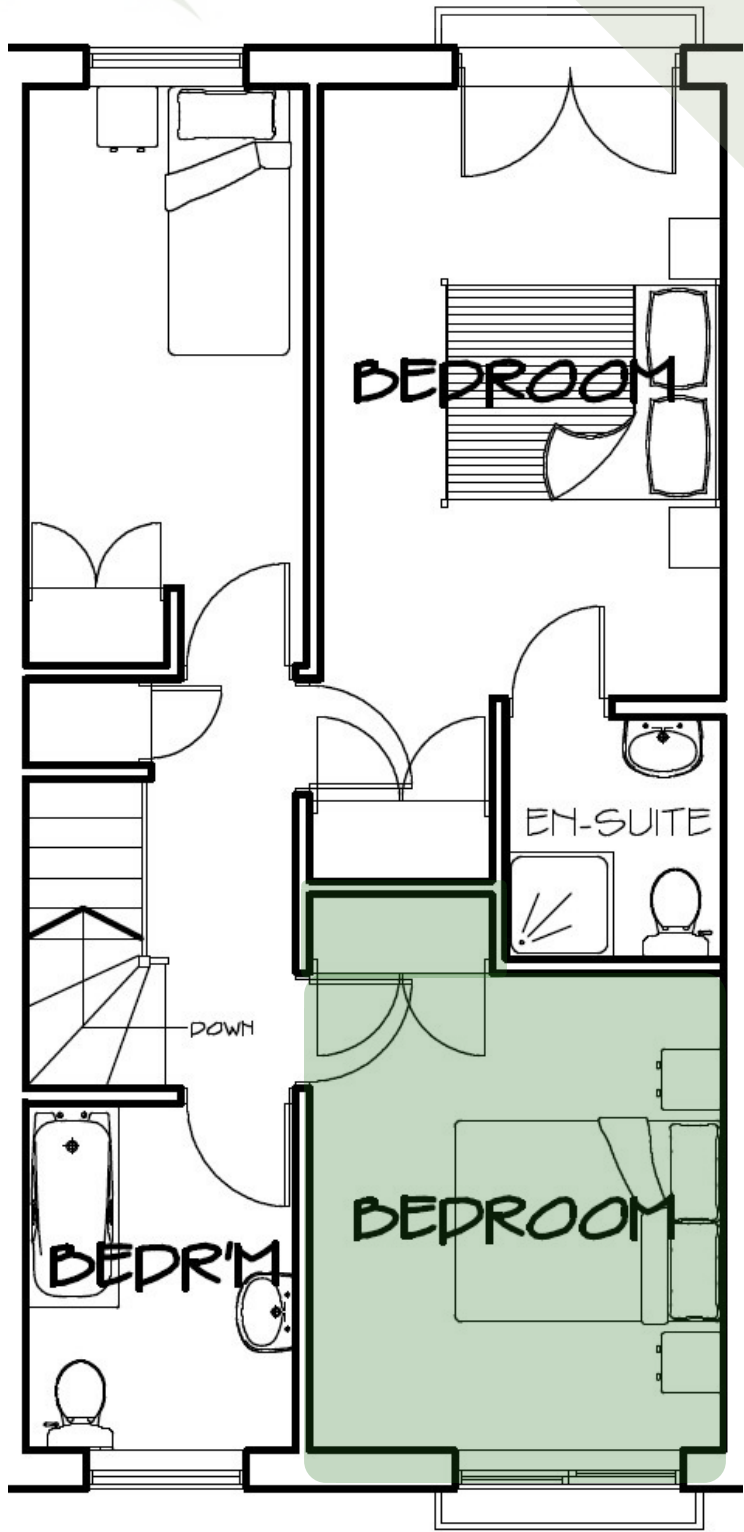
Harle Syke, Burnley BB10 2PN





Mature Homes Ltd

Second Floor Bedroom 2



Bedroom 2

2.70 x 3.21 = 8.58 m

8' 8" x 10' 5" = 92.4 sq ft

- Plug Sockets
- Lights
- Radiators
- Carpets
- Windows
- Built-in Wardrobe
- Internal Doors
- All Ceilings to be skim finished and painted white
- All Walls to be skim finished and painted soft cream
- Chrome Effect Internal Door Furniture



FLITCRAFT
ECOBUILD



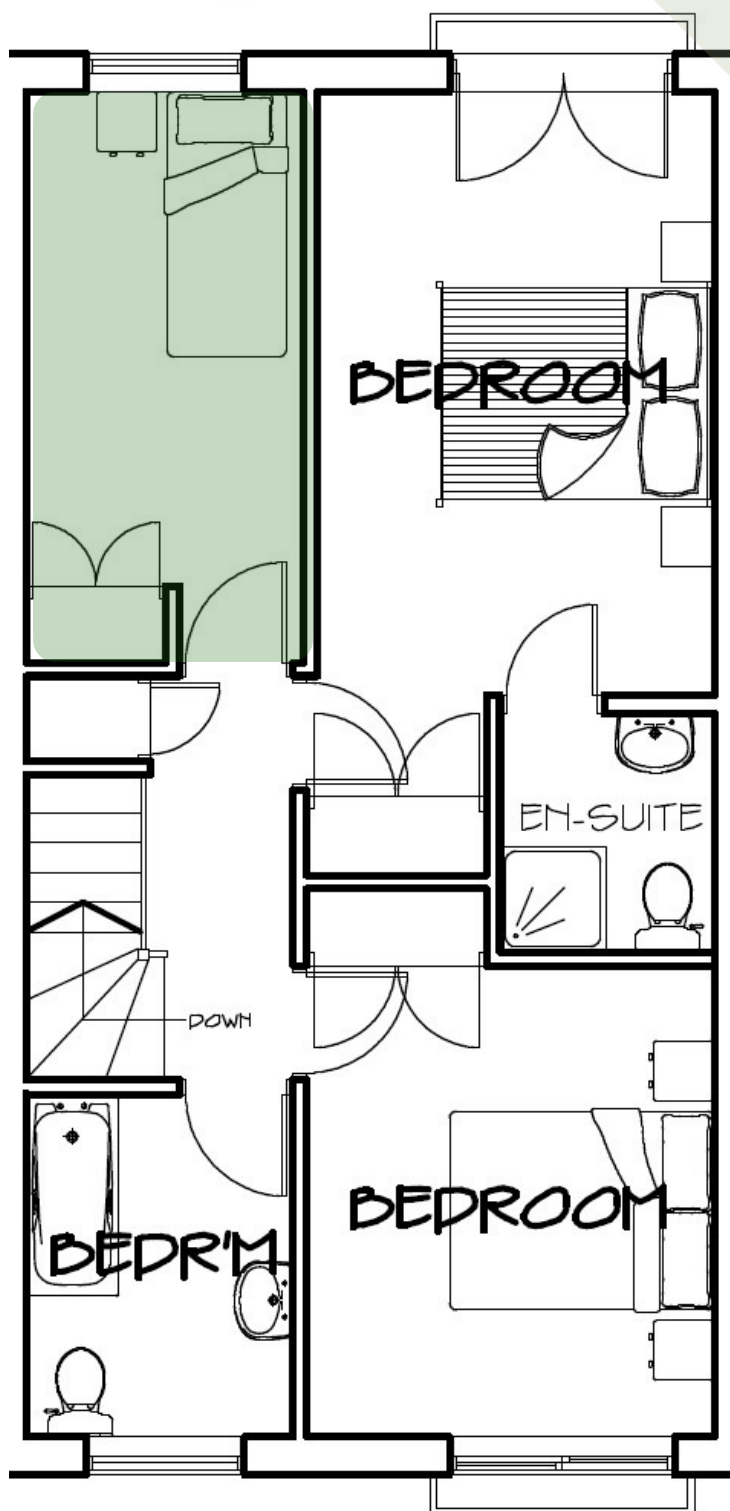
The Intelligent Design Centre
Creative thinking in architecture, engineering and the built environment

Harle Syke, Burnley BB10 2PN



Second Floor Bedroom 3

Ma tree Homes Ltd



Bedroom 3

$$2.34 \times 3.21 = 7.41 \text{ m}$$

$$7' 6" \times 10' 5" = 79.8 \text{ sq ft}$$

- Plug Sockets
- Lights
- Radiators
- Carpets
- Window
- Internal Doors
- Built-in wardrobe
- All Ceilings to be skim finished and painted white
- All Walls to be skim finished and painted soft cream
- Chrome Effect Internal Door Furniture



FLITCRAFT
ECOBUILD



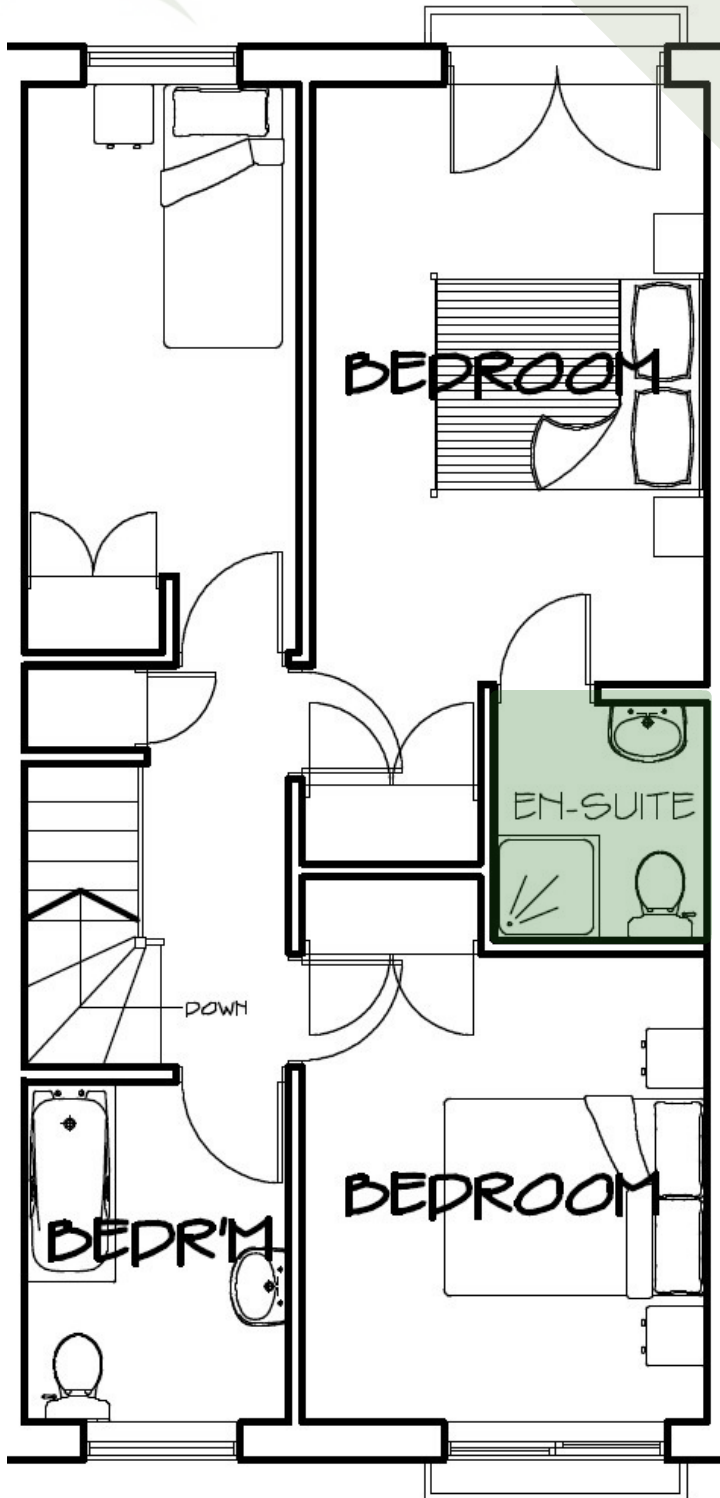
The Intelligent Design Centre
Creative thinking in architecture, engineering and the built environment

Harle Syke, Burnley BB10 2PN



Second Floor En-Suite

Ma tree Homes Ltd



Bedroom 1 En-Suite

2.93 x 3.84 = 11.14 m

9' 6" x 12' 5" = 120 sq ft

- Shower
 - Toilet
 - Sink
 - Lights
 - Hand Towel Rail
 - Windows
 - Tiles
 - Internal Door
 - Plumbing
-
- Bathroom and En-
 - suites to be Half Tiled
 - with a Choice of
 - Porcelanosa Wall Tiles
 - to Sanitaryware Walls



FLITCRAFT
ECOBUILD



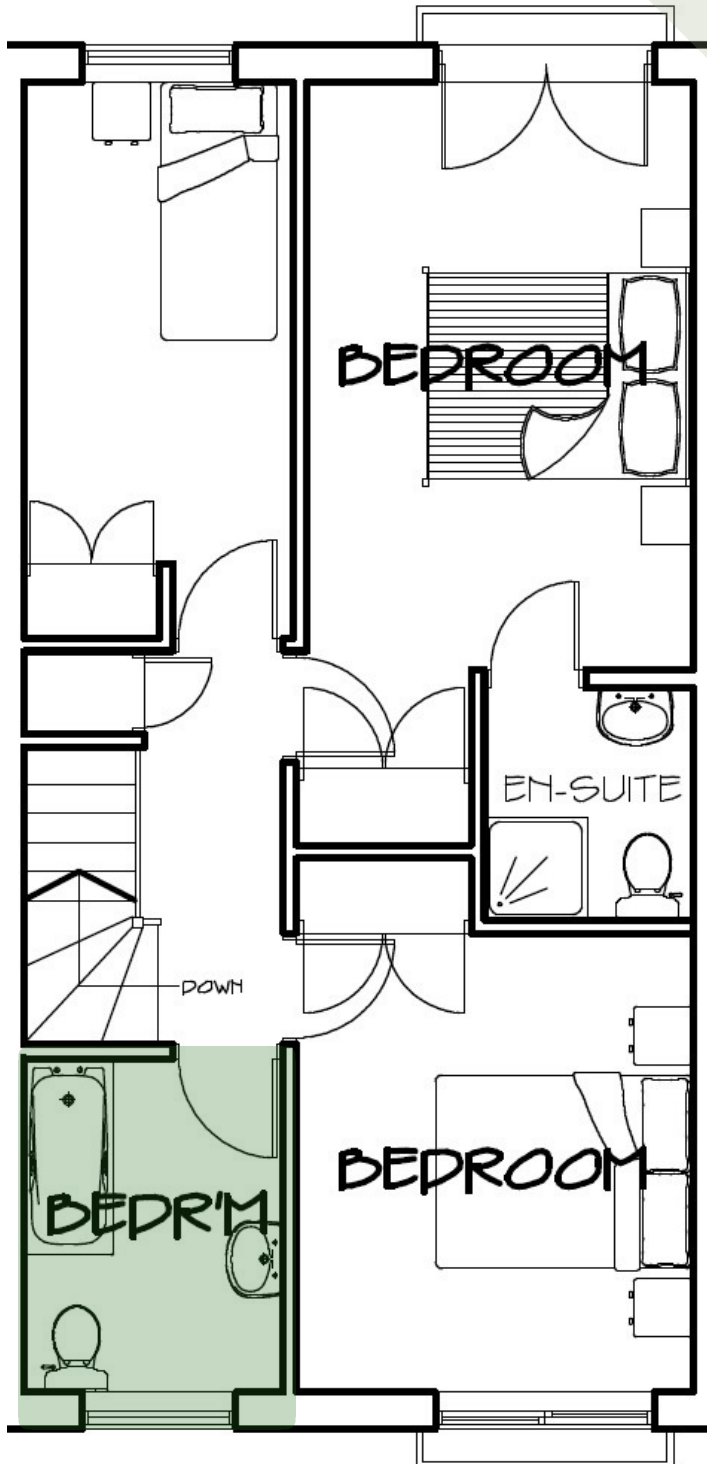
The Intelligent Design Centre

Creative thinking in architecture, engineering and the built environment

Harle Syke, Burnley BB10 2PN

NHBC

Second Floor bathroom



Bathroom

2.11 x 2.09 = 4.27 m

6' 9" x 6' 8" = 46 sq ft

- Shower
 - Toilet
 - Sink
 - Lights
 - Hand Towel Rail
 - Windows
 - Tiles
 - Internal Door
 - Plumbing
-
- Roca Sanitaryware in White
 - Deva Brassware
 - Bathroom and En-suites to be Half Tiled with a Choice of Porcelanosa Wall Tiles to Sanitaryware Walls



FLITCRAFT
ECOBUILD



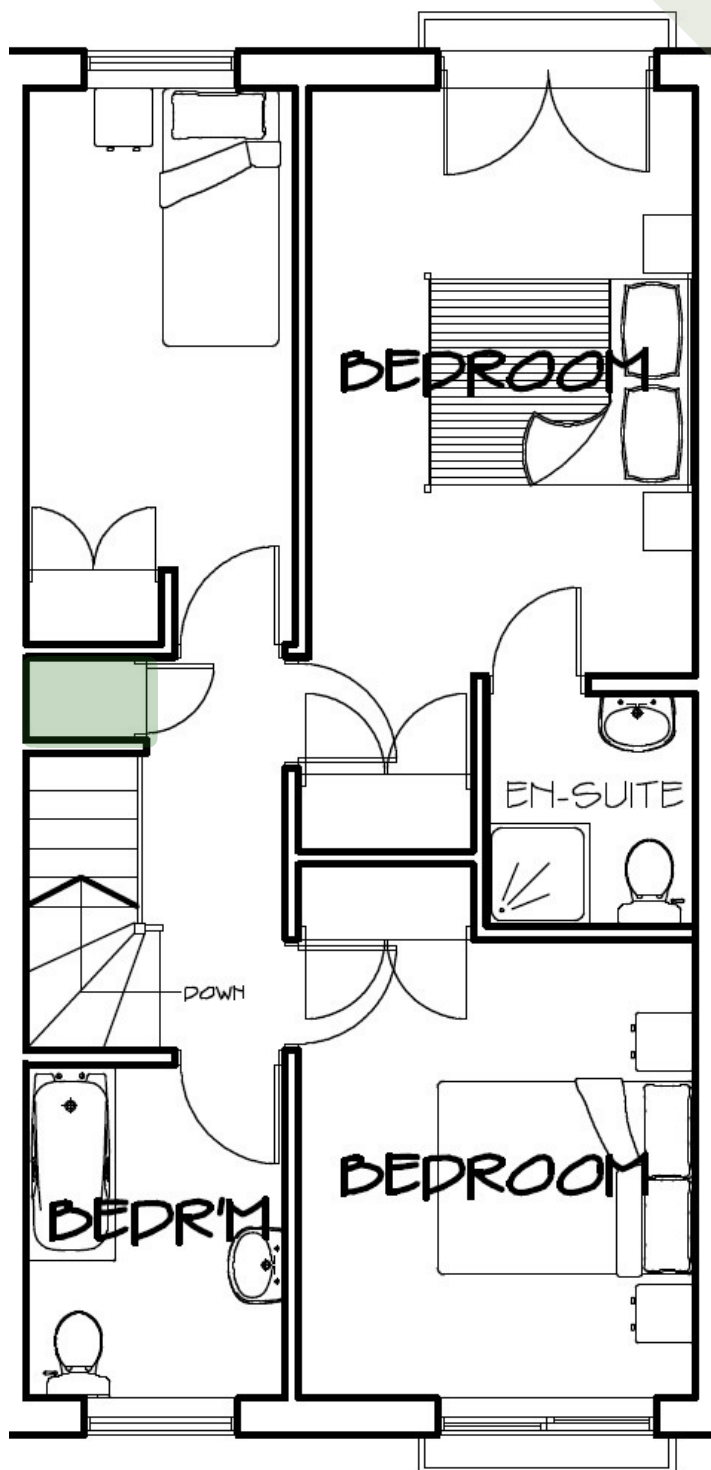
The Intelligent Design Centre
Creative thinking in architecture, engineering and the built environment

Harle Syke, Burnley BB10 2PN



Cylinder Cupboard

Cylinder Cupboard



- Lights
- Internal Door
- Plumbing
- Heating System
- Gas Central Heating
- with High Efficiency
- Boiler and Panel
- Radiators



FLITCRAFT
ECOBUILD



The Intelligent Design Centre
Creative thinking in architecture, engineering and the built environment

Harle Syke, Burnley BB10 2PN

